

Better use of assistive devices at home

The VELA Chair



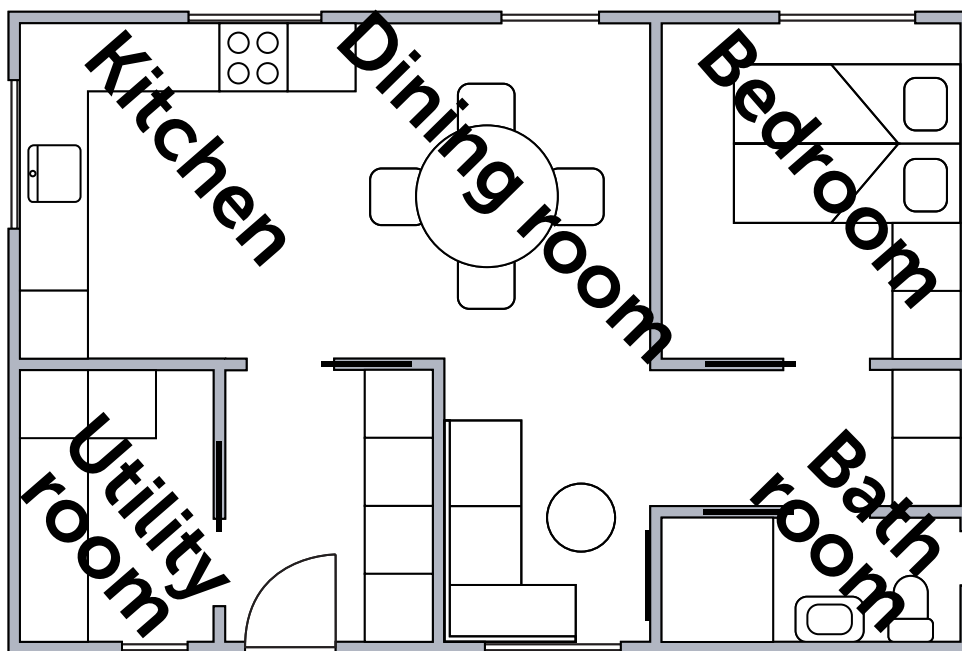
Introduction

Assistive technologies can make a huge difference in the everyday life of people with disabilities, as they enable execution, activity and participation in everyday activities. This also applies to the VELA Chair, which is a device developed by VELA in the 1970s, which has become popular in many homes by providing people with disabilities with greater independence.

The VELA Chair's reason for being is the same as it was back in the 70s: the central brake of the chair that provides safety and liberty to perform various activities. At the same time, the VELA Chair is a mobile chair with smooth-running wheels that allow the user to walk the chair around in a seated position.

A VELA Chair is available with manual or electrical height adjustment. The electric height adjustment reduces inconvenient and painful impacts and shocks when moving. Furthermore, the electrical height adjustment also supports people who are exhausted or with reduced balance and power in the legs to mobilise themselves from sitting to standing position.

On the following pages, the concrete benefits for users and care providers are described from a perspective based on everyday activities at home with users who are using a VELA Chair.



A VELA Chair provides self-reliance/ independence in relation to:



Mobilisation and transferring



Increased Reach



Cooking



Refrigerator



Top cabinet



Dishwashing



Laundry



Hanging up laundry



Ironing



Personal hygiene



Toilet Visits



Closet



Dressing



Watering plants



Cleaning



Vacuuming

Benefits for the user and care provider when using the VELA Chair as an aid

A VELA Chair adds value to users and care providers in many everyday activities in the kitchen, bathroom, bedroom, utility room and living room.

BENEFITS FOR THE USER:

- :: Greater peace of mind through comfort and gentleness with fewer transfers and good ergonomics
- :: Possibility of more involvement, independence and dignity in personal care as well as increased self-esteem
- :: Greater self-reliance when performing everyday activities, which contributes to relieving spouses/relatives
- :: Increased quality of life - including increased dignity, well-being and comfort
- :: Better hygiene and thereby improved health by being able to get to the sink and toilet unassisted
- :: Independence and flexibility as well as the possibility of self-determination and increased mastery of activities

BENEFITS FOR THE CARE PROVIDER:

- :: Better working environment due to fewer transfers and better postures without undue strain
- :: Better utilisation of resources through released time. This time may be spent on more flexible use of working hours so that resources can be used to help more users with a primary focus on the weakest
- :: If a user can independently handle basic tasks, such as toilet visits and transfer to and from the bed, care providers can organise their work, which reduces stress and increases flexibility
- :: Increased self-reliance brings fewer conflicts with users suffering from disorders such as dementia and cognitive impairments, which can increase the quality of life for relatives



Kitchen Activities!

Kitchen activities can be an insurmountable challenge for people with disabilities. Poor balance and reduced force in the legs can limit the possibility of independently doing various tasks in the kitchen, as you tire quicker when in a standing position, and as it increases the risk of dizziness and falling. This may be associated with additional risk when handling knives and hot pots. It is also difficult for people with disabilities to use the facilities in a kitchen in an optimal manner. It requires, among other things, the ability to move and transfer around the kitchen, reach high for food in a fridge and to be able to access lower cabinets, drawers and a dishwashing machine.

A VELA Chair can remedy many of these issues as it relieves and supports the user in a sitting or standing position. Among other things, the VELA Chair comes with four smooth-running wheels that allow the user to walk the chair around in a seated position. The VELA Chair's brake provides stability and safety when operating it in a high as well as a low seat position.



Example:

Cooking

A VELA CHAIR ENABLES:

- :: Handling kitchen utensils and food with two free hands while sitting on a chair that is safe and with the brake on
- :: Cooking on the stove while seated with adjustable and appropriate working height, for better handling of hot pots and the possibility to look down into the pot
- :: Moving around in a seated position, as you can use the legs to walk or push the chair while you carry food in your hands, for example, to and from the refrigerator.
- :: That, in a seated position, you can reach top cabinets or a high-placed microwave due to the electrical height adjustment



Watch video by scanning the QR code or visit: vl1935.dk/cooking

Example:

Dishwashing

A VELA CHAIR ENABLES:

- :: Increased reach from a seated position by, for example, setting the chair low when the dishwasher is to be emptied or high when service is to be put in place in the cabinet
- :: Handling service with two free hands, for example, to empty/refill a dishwasher or to wash the dishes manually while sitting on a safe chair with the brake activated
- :: Energy saving for people with reduced power in their legs or poor balance, as the dishes can be washed by hand in a seated position



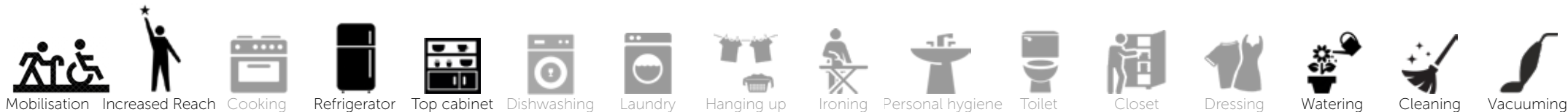
Watch video by scanning the QR code or visit: VL1935.dk/dish



It's Dinner Time!

For most people, dinner time is associated with a good time, good food and good company. For others, it is a time that can be demanding and challenging due to pain or disabilities that make it difficult for sedentary activities at the dining table. A VELA Chair can help create optimal conditions during the meal as it supports and promotes an ergonomically functional seating position. A good sitting position is important for effortless eating and drinking and for reducing the risk of pulmonary aspiration.

Mobilisation and transfer to and from the dining table as well as participation in setting the table cover is often an overlooked element at dinner time. For users with balance difficulties and decreased power in their legs, it is of great benefit to be able to relocate while sitting down, as being able to participate fully or partially in setting the table or other such activities can greatly increase their self-reliance.



Example:

Setting the Table

A VELA CHAIR ENABLES:

- :: That, in a seated position, you can get service or food that is high or low in cabinets due to the electric height adjustment of the chair
- :: That, in a seated position, you can walk the chair forward and move independently to or from the dining area with service or food in your hands, due to the four smooth-running wheels of the chair
- :: Being able to set the table with service and food while seated safely in the chair because of the braking function

Example:

Eating

A VELA CHAIR ENABLES:

- :: Being able to move, while seated, to the dining area and to adjust the chair in relation to the table. The chair can then be braked to achieve stability and safety in the eating situation
- :: Sitting comfortably in an adjustable ergonomic chair that allows you to sit and eat for a long time and socialise during meals



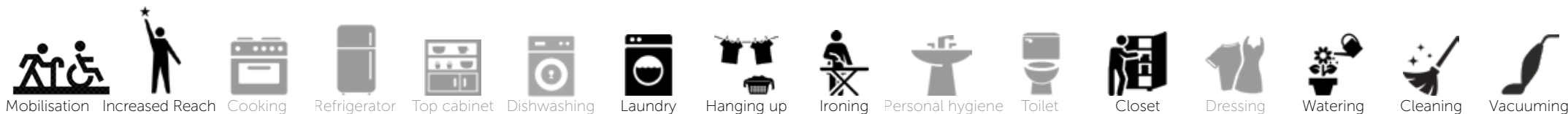
Watch video by scanning the QR code or visit: VL1935.dk/eat



Cleaning and Laundry!

Everyday cleaning at home can be demanding and even inconceivable for people with disabilities. Cleaning requires you to have a good balance, mobility and strength in the legs, and there is often a need to have both hands free for the various activities. For people with disabilities, it is often energy-efficient to do the cleaning while sitting down, since you do not have to spend energy keeping the balance while at the same time having the opportunity to take a few short rests.

A VELA Chair provides support and mobility in connection with cleaning, since in the sitting position, using the legs, it is possible to transfer and move around in the home, with both hands free to vacuum or dry off dust. An electric height adjustment increases the user's reach, so you can take clothes out of and put clothes in a low-placed washing machine and a high-placed dryer. The brake on the VELA Chair ensures a stable and safe workplace, for example, to hang up clothes, put it together or do the ironing.



Example:

Cleaning

A VELA CHAIR ENABLES:

- :: That, in a seated position and due to the electric height adjustment of the chair, you can reach up high or down low, for instance, to dry away dust
- :: Being able to vacuum while in a seated position without losing balance, as the chair is safe and stable
- :: Being able to walk the chair around with your legs due to its smooth-running wheels, while at the same time having your hands free to vacuum or wipe off dust
- :: An active ergonomic seat position with a forward-tilted seat and good back support, assisting the individual cleaning activities
- :: Energy saving for people with reduced power in the legs or poor balance, as cleaning activities can be performed from a seated position with the possibility of taking small rests



Watch video by scanning the QR code or visit: VL1935.dk/clean

Example:

Laundry

A VELA CHAIR ENABLES:

- :: Being able to, in a seated position and due to the electric height adjustment of the chair, set the chair low, e.g. to take out or put in clothes in a washing machine, while setting it high to use a high tumble dryer
- :: Being able to move around with the laundry basket on your thighs or by walking and pushing the chair with your legs, as the chair has smooth-running wheels
- :: Having two free hands for things like hanging up clothes while seated in a safe chair with the brake on without losing balance
- :: Being comfortably seated in an ergonomic chair that can be adjusted with a forward-tilted seat and good back support that supports activities such as hanging up clothes or putting it together
- :: An increased reach in seated position, reducing uncomfortable stoops and unnecessary twisting in the back and shoulders as the chair can be adjusted to the individual activity



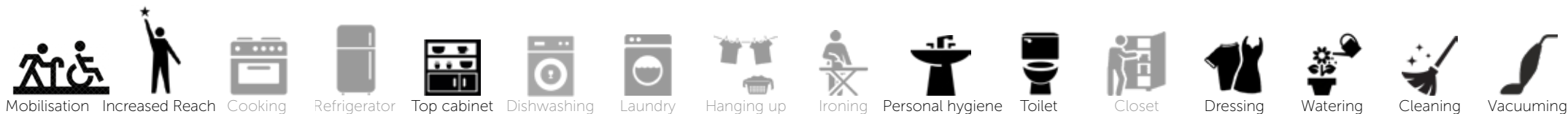
Watch video by scanning the QR code or visit: VL1935.dk/laundry



Personal care!

Activities such as toilet visits and personal care can be a daily challenge and concern for people with disabilities. There is often great identity and dignity associated with, independently, being able to handle toilet visits and personal care, such as tooth brushing, combing and shaving. It can, therefore, be difficult for people with disabilities to accept that they can no longer do these activities in the bathroom independently on the same terms as before.

A VELA Chair makes it possible to independently and in a seated position, mobilise and move to and from the bathroom. The adjustability of the VELA Chair also makes it easier and safer to transfer independently from the chair to the toilet. The electric height adjustment allows for adjusting the working height for the individual activities by the sink and mirror respectively.



Example:

Toilet Visits

A VELA CHAIR ENABLES:

- :: Transferring to and from the bathroom, as you can walk the chair around with your legs due to the smooth-running wheels that can be adapted to different types of surfaces, e.g. tiles
- :: Transferring and mobilising from chair to toilet, as the chair's brake, forward-tilt and armrest make it safer and easier to get up from and sit down on the chair and the toilet
- :: Self-determination for when you want to use the toilet as you do not rely on help for getting to the bathroom. This promotes autonomy and helps improve quality of life on a daily basis

Example:

Personal hygiene

A VELA CHAIR ENABLES:

- :: Being able to sit safely and stable in a chair with the brake on while having two free hands to wash hands, shave, brush teeth or put on make-up
- :: Being able, in a seated position, to adjust the height of the chair to fit the various activities at the sink and mirror respectively, using electric height adjustment
- :: Being able, in a seated position, to walk the chair around and thereby, independently, be able to move around using the four smooth-running wheels of the chair to activities such as getting a towel or toothbrush from a shelf or cabinet



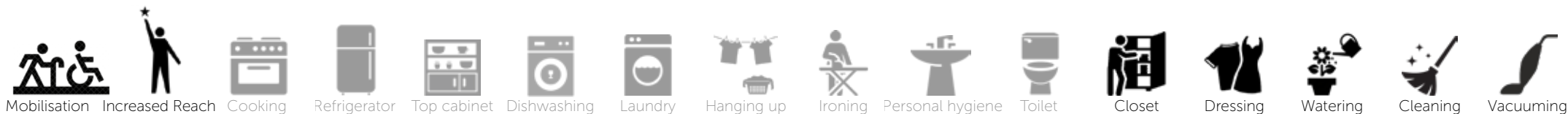
Watch video by scanning the QR code or visit: VL1935.dk/care



Bedtime!

Fatigue is starting to show, and it is time to get ready for bed. The available energy for the day has been used up, which has a significant impact on the level of functioning and concentration. Fatigue and a lack of energy is a problem that is experienced by many people with disabilities on a daily basis. A VELA Chair can help to save energy and make people with reduced power in the legs or poor balance more self-reliant when transferring and dressing.

A VELA Chair provides support and stability, making it possible to, in a seated position, independently mobilise and transfer from chair to bed, thereby minimising the risk of falling. The electric height adjustment can also help and support the fatigued user getting up. The VELA Chair can be height adjusted and adjusted to fit the individual activity, thus minimising inappropriate stoops and twists in the back and shoulders, for example when dressing and undressing.



Example:

To and from Bed

A VELA CHAIR ENABLES:

- :: Being able to mobilise and transfer from bed to chair without assistance, as the chair's brake ensures stability during the activity and reduces the risk of falling
- :: Help and support to mobilise to a standing position using the chair's height adjustment
- :: Self-determination for when you want to get up or go to bed, as you are not dependent on help to do the activity



Watch video by scanning the QR code or visit: VL1935.dk/bed

Example:

Dressing

A VELA CHAIR ENABLES:

- :: Being able, in a seated position, to move around in the bedroom, using the smooth-running wheels of the chair, and can choose and find clothes from cabinets and drawers independently
- :: That, in a seated position, you can reach both high and low in the closet, using the electric height adjustment
- :: Being able to sit stably and safely in a chair with the brake on, having two free hands to take clothes out of and put clothes in cabinets and drawers
- :: More self-sufficiency in dressing as the chair can be adjusted low, reducing inadvertent stoops and unnecessary twists in the back and shoulders



Watch video by scanning the QR code or visit: VL1935.dk/clothes

A VELA Chair can always be adapted to the individual user

Many diseases, transient or chronic, result in functional impairments that differ from disease to disease and from person to person. The functional impairments affect the individual's activity level, so it can be difficult to maintain everyday activities both at home and at work. VELA Chairs

is a series of ergonomic chairs designed for people with disabilities. All chair models support and increase the user's level of activity, ability to function as well as their independence in performing activities at home and work, and each has different characteristics.

A unique chair

The unique feature of the VELA Chairs is that it has a **braking system** that ensures the user a **stable and comfortable workplace**, e.g. for kitchen activities, personal care and doing laundry. Furthermore, the VELA Chairs is equipped with four easy-to-use and directionally stable wheels that allow the chair to be **"walked" around** so that the user can get around at home **unassisted**.

All VELA Chair models are available with manual or electric height adjustment. The electric height adjustment **reduces the occurrence of inconvenient and painful impacts and shocks** when transferring. Also, the electrical height adjustment supports people with reduced balance and power in the legs to **mobilise** from a sitting to a standing position.

Ergonomics and comfort are always of a high importance, and all models are available with a varied selection of seats and backrests so that the chairs can be **adapted** to the individual user.



VELA Tango 100



VELA Tango 200

Different characteristics of the models



The VELA Tango 500 models are the newest addition to the VELA Chair range, which, in addition to the traditional benefits, also comes with a revolutionary, **two-piece ALB backrest** that provides **unique lumbar support** and the possibility of **maximum variation** in the sitting position.



The VELA Tango 510 models offer **relief** and a **good resting position** throughout the day, as they are equipped with a high backrest, headrest and a large back-tilt.



The VELA Tango 300 models are **extra strong and sturdy** chairs that are suitable for a **user of up to 200 kg**.



VELA Salsa is a series of **sit-stand chair with brakes** that provide a **safe, high workplace**. VELA Salsa is for people who need **support and stability, especially for standing tasks**. There are different variations of the seat to accommodate individual preferences.

Accessories provide optimal customisation for the user

All VELA chairs have a wide range of accessories so that the chair can be adapted to the needs of each user. VELA offers solutions in upholstery, comfort, support, grip, electrical setting and working environment.

There are over 200 different pieces of accessories for VELA chairs, including many different types of backrests and seats that can be combined to suit individual needs.



People with difficulties in walking and mobility problems may benefit from:

- :: Extra-large smooth-running wheels that make it even easier to move the chair around.
- :: Footrest on which to rest the feet while sitting and working. Furthermore, it is possible to pull and push yourself around using the arms, while the feet rest on the footrest.



People with reduced power in arms and hands may benefit from:

- :: Arthritis grip that makes it easier to use the chair's adjustment options as they are placed parallel to the seat of the chair instead of below the seat. This means that you do not need to reach so far to get to them, nor is it necessary to use as much effort as with the standard grips.



People with pains and reduced joint mobility may benefit from

- :: T-grip that reduces twists in the body and back, when using the brake on the chair.
- :: Large backrest with air pump that allows for variation and graduation of backrest support.

VELA offers a wide range of accessories that provide the possibility to customise the chair to the individual user

- :: Special seats, backrests, body supports, side supports and headrests **contribute to an ergonomic seat position** that promotes activity
- :: Covers for seats and backrests are an advantage when the chair is used by different users or when there are **challenges related to hygiene**
- :: Armrests are available in different designs and with different cushions that can **relieve and support the arm** in the right position. Armrests contribute to **increased comfort**, provide **safety** and **facilitate entry and exit** of the chair, for those who have balance problems or reduced power in the legs
- :: Push bar **improves the working environment of the care provider**, e.g. when the user is moved sitting in the chair
- :: Special grips, e.g. for people with arthritis, can **ease the adjustment** of the brake, seat and backrest





Danish Quality

VELA is a Danish family-owned company, founded in 1935 by Vermund Larsen. VELA is headquartered in Denmark and has its own development department, production and upholstery workshop.

CHAIRS WITH CARE AND PRECISION

At VELA, we constantly focus on optimising safety, functionality and design in collaboration with our occupational therapists, which always ensures that there is a focus on ergonomics and comfort for the users.

We take into account that our chairs are often exposed to severe wear and tear for many hours daily. Therefore, VELA uses sturdy mechanical parts and chairs are covered with extra durable materials to keep them clean and functional for many years.

All the chairs from VELA are produced in Denmark. We do not produce the chair before it has been ordered, and it is, therefore, possible for us to offer individual customisations.